

Recombinant Human Calsequestrin-1/CASQ1 Protein

Catalog Number: PKSH030556



Note: Centrifuge before opening to ensure complete recovery of vial contents.

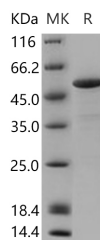
Description

Synonyms	CASQ;PDIB1;VMCQA
Species	Human
Expression Host	E.coli
Sequence	Gln35-Asp396
Accession	P31415
Calculated Molecular Weight	41.8 kDa
Observed molecular weight	52 kDa
Tag	None

Properties

Purity	> 80 % as determined by reducing SDS-PAGE.
Endotoxin	Please contact us for more information.
Storage	Generally, lyophilized proteins are stable for up to 12 months when stored at -20 to -80°C. Reconstituted protein solution can be stored at 4-8°C for 2-7 days. Aliquots of reconstituted samples are stable at < -20°C for 3 months.
Shipping	This product is provided as lyophilized powder which is shipped with ice packs.
Formulation	Lyophilized from sterile 50mM Tris, 10% glycerol, pH 7.5 Normally 5 % - 8 % trehalose, mannitol and 0.01% Tween80 are added as protectants before lyophilization. Please refer to the specific buffer information in the printed manual.
Reconstitution	Please refer to the printed manual for detailed information.

Data



> 80 % as determined by reducing SDS-PAGE.

Background

Calsequestrin-1 is an isoform of calsequestrin. Calsequestrin is a calcium-binding protein of the sarcoplasmic reticulum. It helps hold calcium in the cisterna of the sarcoplasmic reticulum after a muscle contraction, even though the concentration of calcium in the sarcoplasmic reticulum is much higher than in the cytosol. Two forms of calsequestrin have been identified: Calsequestrin-2 and Calsequestrin-1. Calsequestrin-1 is found in fast skeletal muscle. The release of calsequestrin-bound calcium (through a calcium release channel) triggers muscle contraction. The active protein is not highly structured, more than 50% of it adopting a random coil conformation. When calcium binds there is a structural change whereby the alpha-helical content of the protein increases from 3 to 11%. Both forms of calsequestrin are phosphorylated by casein kinase 2, but the cardiac form is phosphorylated more rapidly and to a higher degree.

For Research Use Only

A Reliable Research Partner in Life Science and Medicine

Toll-free: 1-888-852-8623

Web: www.elabscience.com

Tel: 1-832-243-6086

Email: techsupport@elabscience.com

Fax: 1-832-243-6017

Recombinant Human Calsequestrin-1/CASQ1 Protein

Catalog Number: PKSH030556



Calsequestrin-1 is also secreted in the gut where it deprives bacteria of calcium ions.

For Research Use Only

A Reliable Research Partner in Life Science and Medicine

Toll-free: 1-888-852-8623

Tel: 1-832-243-6086

Fax: 1-832-243-6017

Web: www.elabscience.com

Email: techsupport@elabscience.com