

CLEC9A Polyclonal Antibody

catalog number: E-AB-53368

Note: Centrifuge before opening to ensure complete recovery of vial contents.

Description

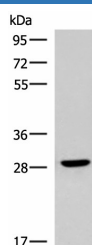
Reactivity	Human
Immunogen	Synthetic peptide of human CLEC9A
Host	Rabbit
Isotype	IgG
Purification	Antigen affinity purification
Conjugation	Unconjugated
buffer	Phosphate buffered solution, pH 7.4, containing 0.05% stabilizer and 50% glycerol.

Applications

Recommended Dilution

WB	1:500-1:2000
-----------	--------------

Data



Western blot analysis of Human fetal brain tissue lysate using CLEC9A Polyclonal Antibody at dilution of 1:800

Observed-MV: Refer to figures

Calculated-MV: 27 kDa

Preparation & Storage

Storage	Store at -20°C Valid for 12 months. Avoid freeze / thaw cycles.
Shipping	The product is shipped with ice pack, upon receipt, store it immediately at the temperature recommended.

Background

CLEC9A is a group VC-type lectin-like receptor (CLR) that functions as an activation receptor and is expressed on myeloid lineage cells. Flow cytometric, Western blot, and deglycosylation analyses showed surface expression of a glycosylated CLEC9A dimer of 40 and 45 kD under reducing conditions. The deglycosylated dimer was approximately 30 and 35 kD. RT-PCR detected CLEC9A expression in most human tissues examined, with highest levels in brain, thymus, and spleen.

For Research Use Only