

# Recombinant Human UBE2B/HR6B Protein

Catalog Number: PKSH033179

**Note:** Centrifuge before opening to ensure complete recovery of vial contents.

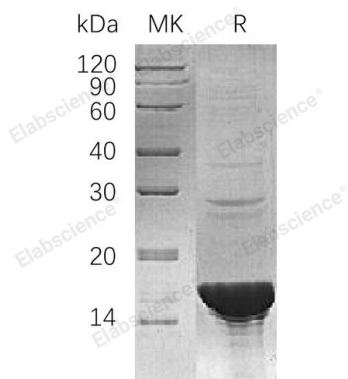
## Description

<b>Species</b>	Human
<b>Mol_Mass</b>	17.5 kDa
<b>Accession</b>	P63146
<b>Bio-activity</b>	Not validated for activity

## Properties

<b>Purity</b>	> 95 % as determined by reducing SDS-PAGE.
<b>Endotoxin</b>	< 1.0 EU per µg of the protein as determined by the LAL method.
<b>Storage</b>	Store at < -20°C, stable for 6 months. Please minimize freeze-thaw cycles.
<b>Shipping</b>	This product is provided as liquid. It is shipped at frozen temperature with blue ice/gel packs. Upon receipt, store it immediately at < - 20°C.
<b>Formulation</b>	Supplied as a 0.2 µm filtered solution of 10mM HEPES, pH 7.5.
<b>Reconstitution</b>	Not Applicable

## Data



> 95 % as determined by reducing SDS-PAGE.

## Background

Ubiquitin-Conjugating Enzyme E2 B (UBE2B) belongs to the ubiquitin-conjugating enzyme family. UBE2B can catalyze the covalent attachment of ubiquitin to other proteins; and is essential for the multi-ubiquitination and degradation of N-end rule substrates. UBE2B is indispensability for postreplication repair of UV-damaged DNA and may be involved in neurite outgrowth. Additionally; UBE2B may have a role in sepsis-induced muscle protein proteolysis and cancer-induced cachexia.

## For Research Use Only