

CD14 Polyclonal Antibody

Catalog Number: E-AB-70113



Note: Centrifuge before opening to ensure complete recovery of vial contents.

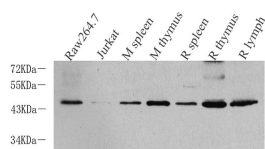
Description

Reactivity	Human, Mouse, Rat
Immunogen	KLH conjugated Synthetic peptide corresponding to Mouse CD14
Host	Rabbit
Isotype	IgG
Purification	Affinity purification
Conjugation	Unconjugated
Formulation	PBS with 0.02% sodium azide, 1% protective protein and 50% glycerol, pH7.4

Applications Recommended Dilution

WB	1:500-1:2000
IHC	1:200-1:800

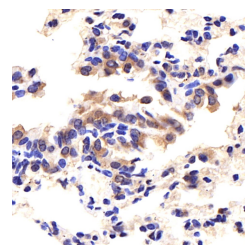
Data



www.elabscience.com

Western Blot analysis of various samples using CD14 Polyclonal Antibody at dilution of 1:1000.

Observed Mw:45kDa
Calculated Mw:40-55kDa



Immunohistochemistry analysis of paraffin-embedded mouse lung using CD14 Polyclonal Antibody at dilution of 1:400.

Preparation & Storage

Storage Store at -20°C. Avoid freeze / thaw cycles.

Background

CD14 is a 50-55 kDa glycosylphosphatidylinositol-anchored glycoprotein. CD14 is preferentially expressed on monocytes and macrophages. CD14 acts as a co-receptor (along with TLR4 and MD-2) for bacterial liposaccharides (LPS). It plays a major role in the inflammatory response of monocytes to LPS.

For Research Use Only

A Reliable Research Partner in Life Science and Medicine

Toll-free: 1-888-852-8623

Web: www.elabscience.com

Tel: 1-832-243-6086

Email: techsupport@elabscience.com

Fax: 1-832-243-6017