

# GALP Polyclonal Antibody

catalog number: E-AB-17983

**Note:** Centrifuge before opening to ensure complete recovery of vial contents.

## Description

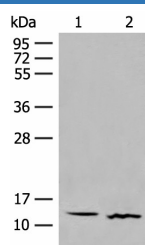
|                     |                                                                                    |
|---------------------|------------------------------------------------------------------------------------|
| <b>Reactivity</b>   | Human;Mouse                                                                        |
| <b>Immunogen</b>    | Synthetic peptide of human GALP                                                    |
| <b>Host</b>         | Rabbit                                                                             |
| <b>Isotype</b>      | IgG                                                                                |
| <b>Purification</b> | Antigen affinity purification                                                      |
| <b>Conjugation</b>  | Unconjugated                                                                       |
| <b>buffer</b>       | Phosphate buffered solution, pH 7.4, containing 0.05% stabilizer and 50% glycerol. |

## Applications

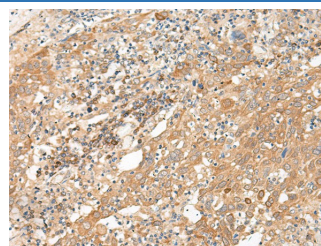
## Recommended Dilution

|            |              |
|------------|--------------|
| <b>WB</b>  | 1:500-1:2000 |
| <b>IHC</b> | 1:50-1:300   |

## Data



Western blot analysis of Human fetal brain tissue and Mouse thymus tissue lysates using GALP Polyclonal Antibody at dilution of 1:500



Immunohistochemistry of paraffin-embedded Human cervical cancer tissue using GALP Polyclonal Antibody at dilution of 1:45(×200)

**Observed-MV:Refer to figures**

**Calculated-MV:13 kDa**

## Preparation & Storage

|                 |                                                                                                        |
|-----------------|--------------------------------------------------------------------------------------------------------|
| <b>Storage</b>  | Store at -20°C Valid for 12 months. Avoid freeze / thaw cycles.                                        |
| <b>Shipping</b> | The product is shipped with ice pack,upon receipt,store it immediately at the temperature recommended. |

## Background

This gene encodes a member of the galanin family of neuropeptides. The encoded protein binds galanin receptors 1, 2 and 3 with the highest affinity for galanin receptor 3 and has been implicated in biological processes involving the central nervous system including hypothalamic regulation of metabolism and reproduction. A peptide encoded by a splice variant of this gene, termed alarin, has vasoactive properties, displays antimicrobial activity against E. coli, and may serve as a marker for neuroblastic tumors.

## For Research Use Only