

# LHPP Polyclonal Antibody

Catalog Number:E-AB-64982



**Note:** Centrifuge before opening to ensure complete recovery of vial contents.

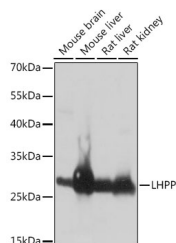
## Description

<b>Reactivity</b>	Human,Mouse,Rat
<b>Immunogen</b>	Recombinant fusion protein of human LHPP (NP_071409.3).
<b>Host</b>	Rabbit
<b>Isotype</b>	IgG
<b>Purification</b>	Affinity purification
<b>Conjugation</b>	Unconjugated
<b>Formulation</b>	PBS with 0.02% sodium azide, 50% glycerol, pH7.3.

## Applications Recommended Dilution

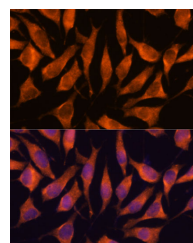
<b>WB</b>	1:500-1:2000
<b>IF</b>	1:50-1:200

## Data



Western blot analysis of extracts of various cell lines using LHPP Polyclonal Antibody at dilution of 1:1000.

**Observed Mw:29kDa**  
**Calculated Mw:22kDa/29kDa**



Immunofluorescence analysis of L929 cells using LHPP Polyclonal Antibody at dilution of 1:100.  
Blue: DAPI for nuclear staining.

## Preparation & Storage

**Storage** Store at -20°C. Avoid freeze / thaw cycles.

## Background

LHPP (Phospholysine Phosphohistidine Inorganic Pyrophosphate Phosphatase) is a Protein Coding gene. Diseases associated with LHPP include Melancholia and Major Depressive Disorder. Among its related pathways are Respiratory electron transport, ATP synthesis by chemiosmotic coupling, and heat production by uncoupling proteins, and Metabolism. Gene Ontology (GO) annotations related to this gene include protein homodimerization activity and inorganic diphosphatase activity. An important paralog of this gene is HDHD2.

## For Research Use Only

A Reliable Research Partner in Life Science and Medicine

Toll-free: 1-888-852-8623

Web: [www.elabscience.com](http://www.elabscience.com)

Tel: 1-832-243-6086

Email: [techsupport@elabscience.com](mailto:techsupport@elabscience.com)

Fax: 1-832-243-6017