

FITC Anti-Rat CD45 Antibody[OX-1]

Catalog Number: E-AB-F1227C

Note: Centrifuge before opening to ensure complete recovery of vial contents.

Description

| | |
|--------------------------------|----------------------------------------------------------------------------------------------------------------------------------------------------------|
| Reactivity | Rat |
| Host | Mouse |
| Isotype | Mouse IgG1, κ |
| Clone No. | OX-1 |
| Isotype Control | FITC Mouse IgG1, κ Isotype Control[MOPC-21] [Product E-AB-F09792C] |
| Conjugation | FITC |
| Conjugation Information | FITC is designed to be excited by the Blue laser (488 nm) and detected using an optical filter centered near 530 nm (e.g., a 525/40 nm bandpass filter). |
| Storage Buffer | Phosphate buffered solution, pH 7.2, containing 0.09% sodium azide and 1% BSA. |

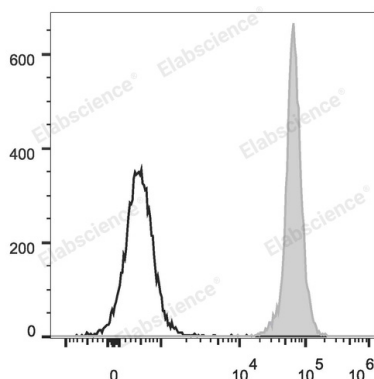
Applications

Recommended usage

FCM

Each lot of this antibody is quality control tested by flow cytometric analysis. **The amount of the reagent is suggested to be used 5 μL of antibody per test (million cells in 100 μL staining volume or per 100 μL of whole blood).** Please check your vial before the experiment. Since applications vary, the appropriate dilutions must be determined for individual use.

Data



Rat splenocytes are stained with FITC Anti-Rat CD45 Antibody (filled gray histogram). Unstained splenocytes (empty black histogram) are used as control.

Preparation & Storage

| | |
|-----------------|-----------------------------------------------------------------------------------------------------------------------------------------------------------|
| Storage | Keep as concentrated solution. This product can be stored at 2-8°C for 12 months. Please protected from prolonged exposure to light and do not freeze. |
| Shipping | Ice bag |

Antigen Information

| | |
|------------------------|-----------------------------------------------------------------------------------------|
| Alternate Names | LCALy-5T200;Leukocyte common antigen;Ptprc;Receptor-type tyrosine-protein phosphatase C |
| Uniprot ID | P04157 |
| Gene ID | 19265 |

For Research Use Only

Background

CD45 is a 180-220 kD protein also known as leukocyte common antigen (LCA). It is a protein tyrosine phosphatase with multiple isoforms differing as a result of alternative splicing of the extracellular domain and glycosylation. CD45 is expressed on all hematopoietic cells except erythrocytes and platelets; isoform expression depends on cell type, activation state, and cell maturation. CD45 functions in signal transduction through T and B cell antigen receptors. CD45 has been shown to interact with various proteins including galectin-1, CD2, CD3, and CD4. The OX-1 antibody has been shown to partially inhibit NK cell-mediated lysis of syngeneic tumor cells in vitro.