

CD19 Monoclonal Antibody

catalog number: AN200114P

Note: Centrifuge before opening to ensure complete recovery of vial contents.

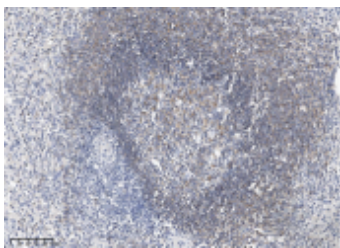
Description

Reactivity	Human
Immunogen	A synthetic peptide corresponding to the N-terminus of the Human CD19
Host	Mouse
Isotype	IgG1
Clone	9A7
Purification	Protein A
Buffer	0.2 µm filtered solution in PBS

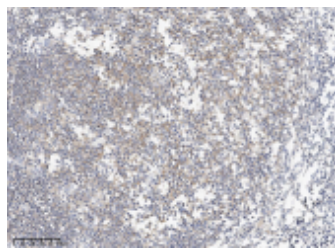
Applications Recommended Dilution

IHC-P	1:50-1:200
--------------	------------

Data



Immunohistochemistry of paraffin-embedded human spleen using CD19 Monoclonal Antibody at dilution of 1:100.



Immunohistochemistry of paraffin-embedded human tonsil using CD19 Monoclonal Antibody at dilution of 1:100.

Preparation & Storage

Storage	This antibody can be stored at 2°C-8°C for one month without detectable loss of activity. Antibody products are stable for twelve months from date of receipt when stored at -20°C to -80°C. Preservative-Free. Avoid repeated freeze-thaw cycles.
Shipping	Ice bag

Background

CD19 protein is a 95 kDa transmembrane glycoprotein that plays a central role in B cell activation and humoral immune responses. CD19 is expressed throughout B cell development from pre-B cells through mature B cells, and it is commonly used as a B cell lineage marker. It is required for the responsiveness of mature B cell to antigen stimulation, germinal center development, and antibody affinity maturation. The CD19 protein associates with the B cell antigen receptor (BCR), CD81, CD38, CD21, CD22, and IFITM1/CD225/Leu13. These associations enable CD19 to amplify B cell signaling and reduce the threshold for antigen stimulation through the BCR.

For Research Use Only