

Recombinant Human CALCB Protein (aa 1-118, Fc Tag)



Catalog Number:PKSH030665

Note: Centrifuge before opening to ensure complete recovery of vial contents.

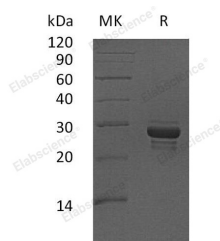
Description

Synonyms	Calcitonin gene-related peptide 2;CALC2;Beta-type CGRP;Calcitonin gene-related peptide II;CALCB
Species	Human
Expression Host	HEK293 Cells
Sequence	Met 1-Phe118
Accession	P10092
Calculated Molecular Weight	36.2 kDa
Tag	C-mFc

Properties

Purity	> 95 % as determined by reducing SDS-PAGE.
Endotoxin	< 1.0 EU per µg of the protein as determined by the LAL method.
Storage	Generally, lyophilized proteins are stable for up to 12 months when stored at -20 to -80°C. Reconstituted protein solution can be stored at 4-8°C for 2-7 days. Aliquots of reconstituted samples are stable at < -20°C for 3 months.
Shipping	This product is provided as lyophilized powder which is shipped with ice packs.
Formulation	Lyophilized from sterile PBS, pH 7.4 Normally 5 % - 8 % trehalose, mannitol and 0.01% Tween80 are added as protectants before lyophilization. Please refer to the specific buffer information in the printed manual.
Reconstitution	Please refer to the printed manual for detailed information.

Data



> 95 % as determined by reducing SDS-PAGE.

Background

CALCB; also known as CGPR and calcitonin 2; belongs to the calcitonin family. CALCB is a calcitonin (CT) peptide which may play a role in the mediation of human inflammatory diseases. It is highly expressed in the skin; blood; and cerebrospinal fluid. CGRP immunolabeling (IL) was detected in epidermal keratinocytes at levels that were especially high and widespread in the skin of humans from locations afflicted with postherpetic neuralgia (PHN) and complex region pain syndrome type 1 (CRPS); of monkeys infected with simian immunodeficiency virus; and of rats subjected to L5/L6 spinal nerve ligation; sciatic nerve chronic constriction; and subcutaneous injection of complete Freund's adjuvant. Increased CGRP-IL was also detected in epidermal keratinocytes of transgenic mice with keratin-14 promoter driven overexpression of noggin; an antagonist to BMP-4 signaling. CGPR dilates a variety of vessels including the coronary; cerebral and systemic vasculature.

For Research Use Only

A Reliable Research Partner in Life Science and Medicine

Toll-free: 1-888-852-8623

Web: www.elabscience.com

Tel: 1-832-243-6086

Email: techsupport@elabscience.com

Fax: 1-832-243-6017

Recombinant Human CALCB Protein (aa 1-118, Fc Tag)

Catalog Number: PKSH030665



For Research Use Only

A Reliable Research Partner in Life Science and Medicine

Toll-free: 1-888-852-8623

Web: www.elabscience.com

Tel: 1-832-243-6086

Email: techsupport@elabscience.com

Fax: 1-832-243-6017