

Phospho-CREB1 (Ser133) Polyclonal Antibody

catalog number: E-AB-20849

Note: Centrifuge before opening to ensure complete recovery of vial contents.

Description

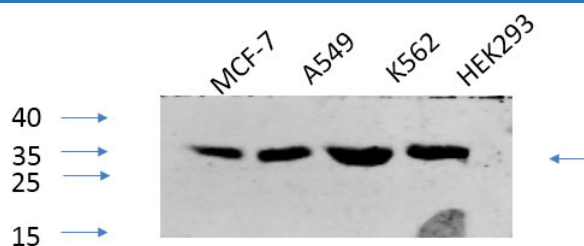
Reactivity	Human;Mouse;Rat
Immunogen	Synthesized peptide derived from human CREB-1 around the phosphorylation site of Ser133
Host	Rabbit
Isotype	IgG
Purification	Affinity purification
Conjugation	Unconjugated
buffer	Phosphate buffered solution, pH 7.4, containing 0.05% stabilizer, 0.5% protein protectant and 50% glycerol.

Applications

Recommended Dilution

WB	1:500-1:2000
IHC	1:100-1:300
IF	1:100-1:300

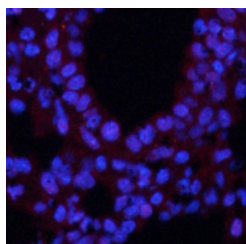
Data



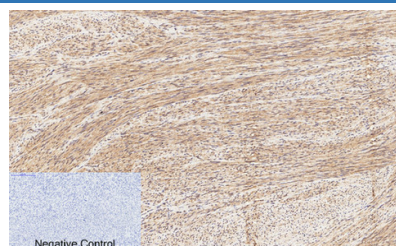
Western Blot analysis of various cells using Phospho-CREB1 (Ser133) Polyclonal Antibody at dilution of 1:1000

Observed-MV:37 kDa

Calculated-MV:37 kDa



Immunofluorescence analysis of Mouse lung tissue using Phospho-CREB1 (Ser133) Polyclonal Antibody at dilution of 1:200



Immunohistochemistry of paraffin-embedded Human uterus tissue using Phospho-CREB1 (Ser133) Polyclonal Antibody at dilution of 1:200

Preparation & Storage

Storage	Store at -20°C Valid for 12 months. Avoid freeze / thaw cycles.
Shipping	The product is shipped with ice pack, upon receipt, store it immediately at the temperature recommended.

Background

For Research Use Only

Phospho-CREB1 (Ser133) Polyclonal Antibody

catalog number: E-AB-20849



This protein binds the cAMP response element (CRE), a sequence present in many viral and cellular promoters. CREB stimulates transcription on binding to the CRE. Transcription activation is enhanced by the TORC coactivators which act independently of Ser-133 phosphorylation. Implicated in synchronization of circadian rhythmicity.

For Research Use Only

A Reliable Research Partner in Life Science and Medicine
Tel: 400-999-2100

Email: techsupport@elabscience.cn

Web: www.elabscience.cn

Rev. V1.9