

Phospho-Vimentin (Tyr38) Polyclonal Antibody

Catalog Number:E-AB-51042



Note: Centrifuge before opening to ensure complete recovery of vial contents.

Description

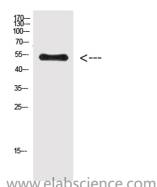
Reactivity	Human,Mouse,Rat
Immunogen	Synthetic peptide from human protein
Host	Rabbit
Isotype	IgG
Purification	Affinity purification
Formulation	PBS with 0.02% sodium azide and 50% glycerol pH 7.4.

Applications

Recommended Dilution

WB	1:500-10000
ELISA	1:10000

Data



Western Blot analysis of HeLa cells using Phospho-Vimentin (Tyr38) Polyclonal Antibody at dilution of 1:500.

Observed Mw:51kDa
Calculated Mw:51kDa

Preparation & Storage

Storage Store at -20°C. Avoid freeze / thaw cycles.

Background

Vimentins are class-III intermediate filaments found in various non-epithelial cells, especially mesenchymal cells. Vimentin is attached to the nucleus, endoplasmic reticulum, and mitochondria, either laterally or terminally.

For Research Use Only

A Reliable Research Partner in Life Science and Medicine

Toll-free: 1-888-852-8623

Web: www.elabscience.com

Tel: 1-832-243-6086

Email: techsupport@elabscience.com

Fax: 1-832-243-6017