

Recombinant Human LDH-A/LDHA Protein (His Tag)

Catalog Number: PKSH032708



Note: Centrifuge before opening to ensure complete recovery of vial contents.

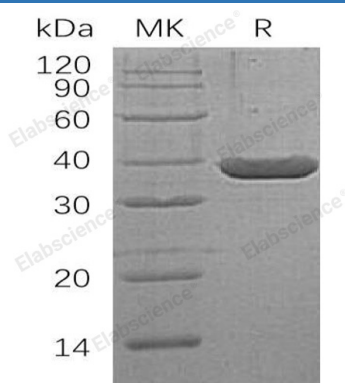
Description

Species	Human
Mol_Mass	38.8 kDa
Accession	P00338
Bio-activity	Not validated for activity

Properties

Purity	> 95 % as determined by reducing SDS-PAGE.
Endotoxin	< 1.0 EU per µg of the protein as determined by the LAL method.
Storage	Store at < -20°C, stable for 6 months. Please minimize freeze-thaw cycles.
Shipping	This product is provided as liquid. It is shipped at frozen temperature with blue ice/gel packs. Upon receipt, store it immediately at < - 20°C.
Formulation	Supplied as a 0.2 µm filtered solution of 20mM Tris-HCl, 500mM NaCl, 5% Trehalose, 5% Mannitol, 0.01% Tween 80, 1mM EDTA, 50% Glycerol, pH8.0.
Reconstitution	Not Applicable

Data



> 95 % as determined by reducing SDS-PAGE.

Background

L-Lactate Dehydrogenase A Chain (LDHA) is an enzyme that catalyzes the conversion of L-lactate and NAD⁺ to pyruvate and NADH in the final step of anaerobic glycolysis. LDHA contains an N-terminal coenzyme binding region, a central catalytic site, and at least nine utilized Lys acetylation and two Tyr phosphorylation sites. LDHA belongs to the lactate dehydrogenase family, expressed predominantly in muscle tissue. LDHA mutations have been linked to exertional myoglobinuria.

For Research Use Only

A Reliable Research Partner in Life Science and Medicine
Tel:400-999-2100

Email:techsupport@elabscience.cn

Web:www.elabscience.cn

Rev. V3.2