

# COL4A3BP Polyclonal Antibody

catalog number: E-AB-11094

**Note:** Centrifuge before opening to ensure complete recovery of vial contents.

## Description

<b>Reactivity</b>	Human;Mouse
<b>Immunogen</b>	Recombinant protein of human COL4A3BP
<b>Host</b>	Rabbit
<b>Isotype</b>	IgG
<b>Purification</b>	Affinity purification
<b>Conjugation</b>	Unconjugated
<b>buffer</b>	Phosphate buffered solution, pH 7.4, containing 0.05% stabilizer and 50% glycerol.

## Applications

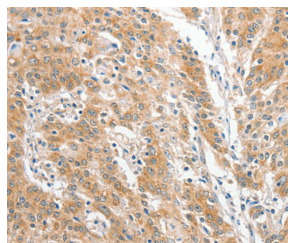
Applications	Recommended Dilution
<b>WB</b>	1:500-1:2000
<b>IHC</b>	1:100-1:300

## Data

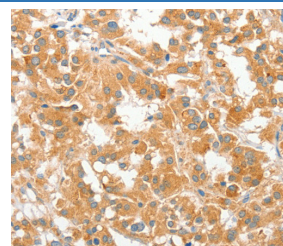


Western Blot analysis of Mouse brain and kidney tissue using COL4A3BP Polyclonal Antibody at dilution of 1:300

**Calculated-MV:71 kDa**



Immunohistochemistry of paraffin-embedded Human gastric cancer using COL4A3BP Polyclonal Antibody at dilution of 1:60



Immunohistochemistry of paraffin-embedded Human thyroid cancer using COL4A3BP Polyclonal Antibody at dilution of 1:60

## Preparation & Storage

<b>Storage</b>	Store at -20°C Valid for 12 months. Avoid freeze / thaw cycles.
<b>Shipping</b>	The product is shipped with ice pack, upon receipt, store it immediately at the temperature recommended.

## Background

This gene encodes a kinase that specifically phosphorylates the N-terminal region of the non-collagenous domain of the alpha 3 chain of type IV collagen, known as the Goodpasture antigen. Goodpasture disease is the result of an autoimmune response directed at this antigen. One isoform of this protein is also involved in ceramide intracellular transport. Three transcript variants encoding different isoforms have been found for this gene.

## For Research Use Only