

## Recombinant LDHC Monoclonal Antibody

catalog number: **AN301735L**

**Note:** Centrifuge before opening to ensure complete recovery of vial contents.

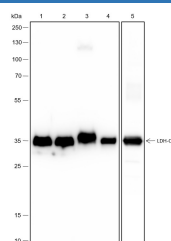
### Description

|                     |   |
|---------------------|---|
| <b>Reactivity</b>   | Human;Rat;Mouse   |
| <b>Immunogen</b>    | Recombinant human LDHC fragment                                 |
| <b>Host</b>         | Rabbit  |
| <b>Isotype</b>      | IgG, κ  |
| <b>Clone</b>        | A443  |
| <b>Purification</b> | Protein A purified  |
| <b>Buffer</b>       | PBS, 50% glycerol, 0.05% Proclin 300, 0.05% protein protectant. |

### Applications Recommended Dilution

|           |              |
|-----------|--------------|
| <b>WB</b> | 1:500-1:1000 |
|-----------|--------------|

### Data



Western Blot with LDHC Monoclonal Antibody at dilution of 1:1000. Lane 1: HeLa, Lane 2: HEK-293, Lane 3: Mouse brain, Lane 4: Rat liver, Lane 5: Mouse testis

**Observed-MW:36 kDa**

**Calculated-MW:36 kDa**

### Preparation & Storage

|                 |   |
|-----------------|---|
| <b>Storage</b>  | Store at -20°C Valid for 12 months. Avoid freeze / thaw cycles. |
| <b>Shipping</b> | Ice bag   |

### Background

Lactate dehydrogenase C catalyzes the conversion of L-lactate and NAD to pyruvate and NADH in the final step of anaerobic glycolysis. LDHC is testis-specific and belongs to the lactate dehydrogenase family. Two transcript variants have been detected which differ in the 5' untranslated region. In particular, recent researches have showed LDHC is expressed in a broad spectrum of tumours, with frequent appearance in lung cancer, melanoma and breast cancer. A recent report indicated that LDHC plays an important role in inducing breast cancer metastasis.

### For Research Use Only