

Recombinant Phospho-c-Jun (Ser73) Monoclonal Antibody

catalog number: **AN300154L**

Note: Centrifuge before opening to ensure complete recovery of vial contents.

Description

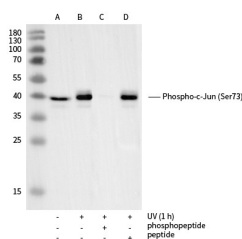
Reactivity	Human
Immunogen	A synthetic phosphopeptide corresponding to residues around Ser73 of the Human Phospho-c-Jun
Host	Rabbit
Isotype	IgG
Clone	A1268
Purification	Protein A
Buffer	10 mM sodium HEPES, 150 mM NaCl, 100 µg/mL protein protectant, 50% glycerol, pH 7.5

Applications

Recommended Dilution

WB	1:10000-1:50000
-----------	-----------------

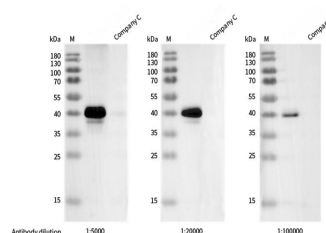
Data



Western blot analysis of extracts from serum-starved NIH/3T3, untreated (line A); treated with UV (1 h), without peptide (line B) or antigen-specific phosphopeptide (line C) or antigen-specific peptide (line D) using Phospho-c-Jun (Ser73) Monoclonal Antibody at 1:20000 dilution.

Observed-MW:40 kDa

Calculated-MW:35 kDa



Western blot analysis of extracts from serum-starved NIH/3T3, treated with UV (1h), using Phospho-c-Jun (Ser73) Antibody and other brands' antibodies (Company C) at dilution of 1:5000, 1:20000 and 1:100000.

Observed-MW:40 kDa

Calculated-MW:35 kDa

Preparation & Storage

Storage	This antibody can be stored at 2°C-8°C for one month without detectable loss of activity. Antibody products are stable for twelve months from date of receipt when stored at -20°C to -80°C. Preservative-Free. Avoid repeated freeze-thaw cycles.
Shipping	Ice bag

Background

This gene is the putative transforming gene of avian sarcoma virus 17. It encodes a protein which is highly similar to the viral protein, and which interacts directly with specific target DNA sequences to regulate gene expression. This gene is intronless and is mapped to 1p32-p28, a chromosomal region involved in both translocations and deletions in human malignancies.

For Research Use Only

Toll-free: 1-888-852-8623
Web: www.elabscience.com

Tel: 1-832-243-6086
Email: techsupport@elabscience.com

Fax: 1-832-243-6017

Rev. V1.2