

# S100A4 Polyclonal Antibody

Catalog Number: E-AB-70283

**Note:** Centrifuge before opening to ensure complete recovery of vial contents.

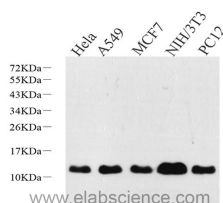
## Description

<b>Reactivity</b>	Human, Mouse, Rat
<b>Immunogen</b>	Recombinant protein corresponding to Mouse S100A4
<b>Host</b>	Rabbit
<b>Isotype</b>	IgG
<b>Purification</b>	Affinity purification
<b>Conjugation</b>	Unconjugated
<b>Formulation</b>	PBS with 0.02% sodium azide, 1% protective protein and 50% glycerol, pH7.4

## Applications Recommended Dilution

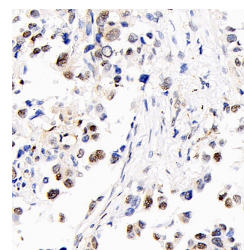
<b>WB</b>	1:500-1:2000
<b>IHC</b>	1:300-1:800

## Data

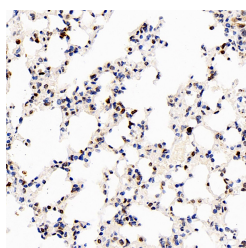


Western Blot analysis of various samples using S100A4 Polyclonal Antibody at dilution of 1:600.

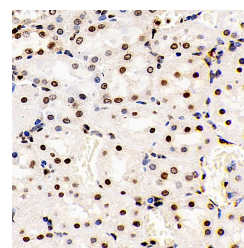
**Observed Mw: 12kDa**  
**Calculated Mw: 12kDa**



Immunohistochemistry analysis of paraffin-embedded human lung cancer using S100A4 Polyclonal Antibody at dilution of 1:400.



Immunohistochemistry analysis of paraffin-embedded Mouse lung using S100A4 Polyclonal Antibody at dilution of 1:400.



Immunohistochemistry analysis of paraffin-embedded Rat kidney using S100A4 Polyclonal Antibody at dilution of 1:400.

## Preparation & Storage

**Storage** Store at -20°C. Avoid freeze / thaw cycles.

## Background

S100A4 is a member of the S100 family of calcium-binding proteins. The S100 family members have been involved in the regulation of a number of cellular processes such as cell cycle progression and differentiation. S100A4 is known to localize to and function in the nucleus, cytoplasm of cells and the extracellular space. S100A4 has also been shown to be

## For Research Use Only

A Reliable Research Partner in Life Science and Medicine

Toll-free: 1-888-852-8623

Web: [www.elabscience.com](http://www.elabscience.com)

Tel: 1-832-243-6086

Email: [techsupport@elabscience.com](mailto:techsupport@elabscience.com)

Fax: 1-832-243-6017

# S100A4 Polyclonal Antibody

Catalog Number: E-AB-70283



associated with tumor growth, motility, invasion, metastasis, angiogenesis, apoptosis and chemoresistance. It is a fibroblast-specific protein associated with mesenchymal cell morphology and motility, is expressed during epithelial-mesenchymal transformations (EMT) in vivo. It is an improved marker for lung fibroblasts that could be useful for investigating the pathogenesis of pulmonary fibrosis. Overexpression of S100A4 is correlated with a worse prognosis in patients with various types of cancer.

---

## For Research Use Only

A Reliable Research Partner in Life Science and Medicine

Toll-free: 1-888-852-8623

Tel: 1-832-243-6086

Fax: 1-832-243-6017

Web: [www.elabscience.com](http://www.elabscience.com)

Email: [techsupport@elabscience.com](mailto:techsupport@elabscience.com)