

# Recombinant Human PBEF/NAMPT Protein (His Tag)



Catalog Number:PDEH100011

**Note:** Centrifuge before opening to ensure complete recovery of vial contents.

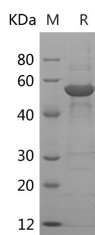
## Description

<b>Synonyms</b>	Pre-B cell-enhancing factor;Nicotinamide phosphoribosyltransferase;NAmpRTase;Nampt;Pre-B-cell colony-enhancing factor 1;Visfatin;NAMPT;PBEF;PBEF1
<b>Species</b>	Human
<b>Expression Host</b>	E.coli
<b>Sequence</b>	Met1-His491
<b>Accession</b>	P43490
<b>Calculated Molecular Weight</b>	57.0 kDa
<b>Observed molecular weight</b>	55 kDa
<b>Tag</b>	N-His

## Properties

<b>Purity</b>	> 90 % as determined by reducing SDS-PAGE.
<b>Endotoxin</b>	< 1.0 EU per µg of the protein as determined by the LAL method.
<b>Storage</b>	Generally, lyophilized proteins are stable for up to 12 months when stored at -20 to -80°C. Reconstituted protein solution can be stored at 4-8°C for 2-7 days. Aliquots of reconstituted samples are stable at < -20°C for 3 months.
<b>Shipping</b>	This product is provided as lyophilized powder which is shipped with ice packs.
<b>Formulation</b>	Lyophilized from a 0.2 µm filtered solution of 20mM PB, 150mM NaCl, pH 7.4. Normally 5 % - 8 % trehalose, mannitol and 0.01% Tween80 are added as protectants before lyophilization. Please refer to the specific buffer information in the printed man
<b>Reconstitution</b>	Please refer to the printed manual for detailed information.

## Data



> 90 % as determined by reducing SDS-PAGE.

## Background

Pre-B cell colony enhancing factor (PBEF) was originally identified as a cytokine that potentiated the clonal expansion and differentiation of pre-B cells; but it is also acknowledged to be the ubiquitous intracellular enzyme nicotinamide phosphoribosyltransferase (NAMPT) and the adipokine “visfatin”. PBEF is constitutively expressed in the fetal membranes where its greatest expression is in the amnion. It has intracellular and extracellular forms. Most of the intracellular functions of PBEF are due to its role as a Nampt which can induce angiogenesis through upregulation of VEGF and VEGFR and secretion of MCP-1. Extracellular PBEF has been shown to increase inflammatory cytokines;

## For Research Use Only

A Reliable Research Partner in Life Science and Medicine

Toll-free: 1-888-852-8623

Web: [www.elabscience.com](http://www.elabscience.com)

Tel: 1-832-243-6086

Email: [techsupport@elabscience.com](mailto:techsupport@elabscience.com)

Fax: 1-832-243-6017

# Recombinant Human PBEF/NAMPT Protein (His Tag)



Catalog Number:PDEH100011

such as TNF- $\alpha$ ; IL-1 $\beta$ ; IL-16; and TGF- $\beta$ 1. PBEF also increases the production of IL-6; TNF- $\alpha$ ; and IL-1 $\beta$  in CD14+ monocytes; macrophages; and dendritic cells; enhances the effectiveness of T cells.

---

## For Research Use Only

A Reliable Research Partner in Life Science and Medicine

Toll-free: 1-888-852-8623

Tel: 1-832-243-6086

Fax: 1-832-243-6017

Web: [www.elabscience.com](http://www.elabscience.com)

Email: [techsupport@elabscience.com](mailto:techsupport@elabscience.com)