

Recombinant Cardiac Troponin T Monoclonal Antibody

catalog number: **AN300897L**

Note: Centrifuge before opening to ensure complete recovery of vial contents.

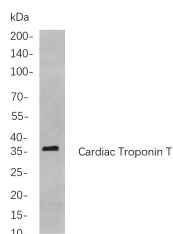
Description

Reactivity	Human;Mouse;Rat
Immunogen	Recombinant Human Cardiac Troponin T protein
Host	Rabbit
Isotype	IgG, κ
Clone	B844
Purification	Protein A
Buffer	PBS, 50% glycerol, 0.05% Proclin 300, 0.05% protein protectant.

Applications Recommended Dilution

WB	1:2000-1:10000
-----------	----------------

Data



Western Blot with Recombinant Cardiac Troponin T
Monoclonal Antibody at dilution of 1:1000 dilution. Lane A:
Rat heart cells.

Observed-MW:36 kDa

Calculated-MW:36 kDa

Preparation & Storage

Storage	Store at -20°C Valid for 12 months. Avoid freeze / thaw cycles.
Shipping	Ice bag

Background

The protein encoded by this gene is The tropomyosin-binding subunit of The troponin complex, which is located on The thin filament of striated muscles and regulates muscle contraction in response to alterations in intracellular calcium ion concentration. Mutations in this gene have been associated with familial hypertrophic cardiomyopathy as well as with dilated cardiomyopathy. Transcripts for this gene undergo alternative splicing that results in many tissue-specific isoforms, however, The full-length nature of some of these variants has not yet been determined.

For Research Use Only

Toll-free: 1-888-852-8623
Web: www.elabscience.com

Tel: 1-832-243-6086
Email: techsupport@elabscience.com

Fax: 1-832-243-6017

Rev. V1.1