

SENP8 Polyclonal Antibody

Catalog Number:E-AB-90473



Note: Centrifuge before opening to ensure complete recovery of vial contents.

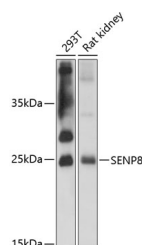
Description

Reactivity	Human,Rat
Immunogen	Recombinant fusion protein of human SENP8
Host	Rabbit
Isotype	IgG
Purification	Affinity purification
Conjugation	Unconjugated
Formulation	PBS with 0.01% thiomersal,50% glycerol,pH7.3.

Applications Recommended Dilution

WB	1:500-1:2000
-----------	--------------

Data



Western blot analysis of extracts of various cell lines using SENP8 Polyclonal Antibody at 1:3000 dilution.

Observed MW:24kDa

Calculated Mw:24kDa

Preparation & Storage

Storage Store at -20°C. Avoid freeze/thaw cycles.

Background

This gene encodes a cysteine protease that is a member of the sentrin-specific protease family. The encoded protein is involved in processing and deconjugation of the ubiquitin-like protein termed, neural precursor cell expressed developmentally downregulated 8. Alternate splicing results in multiple transcript variants.

For Research Use Only

A Reliable Research Partner in Life Science and Medicine

Toll-free: 1-888-852-8623

Web: www.elabscience.com

Tel: 1-832-243-6086

Email: techsupport@elabscience.com

Fax: 1-832-243-6017