

Cleaved-PARP1 (D214) Polyclonal Antibody

catalog number: E-AB-30080

Note: Centrifuge before opening to ensure complete recovery of vial contents.

Description

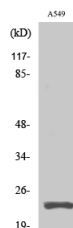
Reactivity	Human;Mouse
Immunogen	Synthesized peptide derived from the Internal region of human PARP-1
Host	Rabbit
Isotype	IgG
Purification	Affinity purification
Conjugation	Unconjugated
buffer	Phosphate buffered solution, pH 7.4, containing 0.05% stabilizer, 0.5% protein protectant and 50% glycerol.

Applications

Recommended Dilution

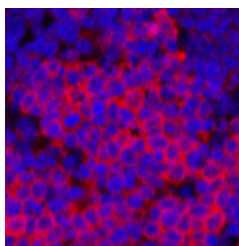
WB	1:500-2000
IHC	1:50-300
IF	1:50-300

Data

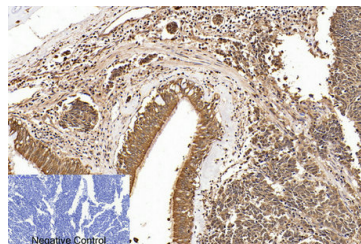


Western Blot analysis of A549 cells using Cleaved-PARP1 (D214) Polyclonal Antibody at dilution of 1:2000.

Observed-MV:24 kDa
Calculated-MV:113 kDa



Immunofluorescence analysis of Rat spleen tissue using Cleaved-PARP1 (D214) Polyclonal Antibody at dilution of 1:200.



Immunohistochemistry of paraffin-embedded Human lung cancer tissue using Cleaved-PARP1 (D214) Polyclonal Antibody at dilution of 1:200.

Preparation & Storage

Storage	Store at -20°C Valid for 12 months. Avoid freeze / thaw cycles.
Shipping	The product is shipped with ice pack, upon receipt, store it immediately at the temperature recommended.

Background

For Research Use Only

Cleaved-PARP1 (D214) Polyclonal Antibody

catalog number: E-AB-30080



This gene encodes a chromatin-associated enzyme, poly(ADP-ribosyl)transferase, which modifies various nuclear proteins by poly(ADP-ribosyl)ation. The modification is dependent on DNA and is involved in the regulation of various important cellular processes such as differentiation, proliferation, and tumor transformation and also in the regulation of the molecular events involved in the recovery of cell from DNA damage. In addition, this enzyme may be the site of mutation in Fanconi anemia, and may participate in the pathophysiology of type I diabetes.

For Research Use Only

A Reliable Research Partner in Life Science and Medicine
Tel: 400-999-2100

Email: techsupport@elabscience.cn

Web: www.elabscience.cn

Rev. V1.7