

# BAK1 Polyclonal Antibody

Catalog Number: E-AB-60009



**Note:** Centrifuge before opening to ensure complete recovery of vial contents.

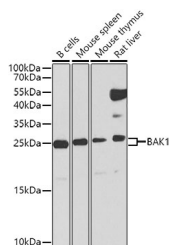
## Description

|                     |   |
|---------------------|---|
| <b>Reactivity</b>   | Human, Mouse, Rat                                 |
| <b>Immunogen</b>    | A synthetic peptide of human BAK1 (NP_001179.1).  |
| <b>Host</b>         | Rabbit  |
| <b>Isotype</b>      | IgG   |
| <b>Purification</b> | Affinity purification                             |
| <b>Conjugation</b>  | Unconjugated                                      |
| <b>Formulation</b>  | PBS with 0.02% sodium azide, 50% glycerol, pH7.3. |

## Applications Recommended Dilution

|           |              |
|-----------|--------------|
| <b>WB</b> | 1:500-1:2000 |
| <b>IF</b> | 1:50-1:200   |

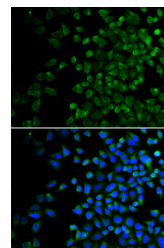
## Data



Western blot analysis of extracts of various cell lines using BAK1 Polyclonal Antibody at dilution of 1:1000.

**Observed Mw: 26kDa**

**Calculated Mw: 16kDa/23kDa**



Immunofluorescence analysis of HeLa cells using BAK1 Polyclonal Antibody

## Preparation & Storage

**Storage** Store at -20°C. Avoid freeze / thaw cycles.

## Background

The protein encoded by this gene belongs to the BCL2 protein family. BCL2 family members form oligomers or heterodimers and act as anti- or pro-apoptotic regulators that are involved in a wide variety of cellular activities. This protein localizes to mitochondria, and functions to induce apoptosis. It interacts with and accelerates the opening of the mitochondrial voltage-dependent anion channel, which leads to a loss in membrane potential and the release of cytochrome c. This protein also interacts with the tumor suppressor P53 after exposure to cell stress.

## For Research Use Only

A Reliable Research Partner in Life Science and Medicine

Toll-free: 1-888-852-8623

Web: [www.elabscience.com](http://www.elabscience.com)

Tel: 1-832-243-6086

Email: [techsupport@elabscience.com](mailto:techsupport@elabscience.com)

Fax: 1-832-243-6017