

Note: Centrifuge before opening to ensure complete recovery of vial contents.

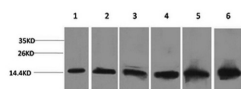
Description

Reactivity	Human, Mouse, Rat
Immunogen	Recombinant Protein
Host	Mouse
Isotype	IgG
Clone	Clone: 8G3
Purification	Protein A purification
Conjugation	Unconjugated
Formulation	PBS with 0.02% sodium azide and 50% glycerol pH 7.4.

Applications Recommended Dilution

WB	1:500-1:2000
IHC	1:100-1:300
IF	1:100-1:300

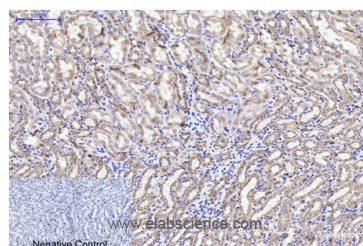
Data



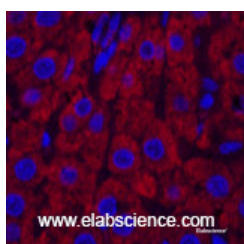
www.elabscience.com

Western Blot analysis of 1) HeLa, 2) 293T, 3) 3T3, 4) Mouse liver, 5) Rat liver, 6) Rat kidney with CYCS Monoclonal Antibody.

Observed Mw: 14kDa



Immunohistochemistry of paraffin-embedded Mouse kidney tissue using CYCS Monoclonal Antibody at dilution of 1:200.



Immunofluorescence analysis of Rat liver tissue using CYCS Monoclonal Antibody at dilution of 1:200.

Preparation & Storage

Storage Store at -20°C. Avoid freeze / thaw cycles.

Background

For Research Use Only

A Reliable Research Partner in Life Science and Medicine

Toll-free: 1-888-852-8623

Web: www.elabscience.com

Tel: 1-832-243-6086

Email: techsupport@elabscience.com

Fax: 1-832-243-6017

CYCS Monoclonal Antibody

Catalog Number: E-AB-22110



This gene encodes a small heme protein that functions as a central component of the electron transport chain in mitochondria. The encoded protein associates with the inner membrane of the mitochondrion where it accepts electrons from cytochrome b and transfers them to the cytochrome oxidase complex. This protein is also involved in initiation of apoptosis. Mutations in this gene are associated with autosomal dominant nonsyndromic thrombocytopenia. Numerous processed pseudogenes of this gene are found throughout the human genome.

For Research Use Only

A Reliable Research Partner in Life Science and Medicine

Toll-free: 1-888-852-8623

Tel: 1-832-243-6086

Fax: 1-832-243-6017

Web: www.elabscience.com

Email: techsupport@elabscience.com