

# Recombinant Human C6/complement component 6 Protein (His Tag)



Catalog Number:PKSH030844

**Note:** Centrifuge before opening to ensure complete recovery of vial contents.

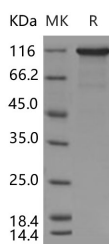
## Description

<b>Synonyms</b>	C6
<b>Species</b>	Human
<b>Expression Host</b>	HEK293 Cells
<b>Sequence</b>	Met 1-Ala 934
<b>Accession</b>	AAA59668.1
<b>Calculated Molecular Weight</b>	104 kDa
<b>Observed molecular weight</b>	110 kDa
<b>Tag</b>	C-His

## Properties

<b>Purity</b>	> 90 % as determined by reducing SDS-PAGE.
<b>Endotoxin</b>	< 1.0 EU per µg of the protein as determined by the LAL method.
<b>Storage</b>	Generally, lyophilized proteins are stable for up to 12 months when stored at -20 to -80°C. Reconstituted protein solution can be stored at 4-8°C for 2-7 days. Aliquots of reconstituted samples are stable at < -20°C for 3 months.
<b>Shipping</b>	This product is provided as lyophilized powder which is shipped with ice packs.
<b>Formulation</b>	Lyophilized from sterile PBS, pH 7.4 Normally 5 % - 8 % trehalose, mannitol and 0.01% Tween80 are added as protectants before lyophilization. Please refer to the specific buffer information in the printed manual.
<b>Reconstitution</b>	Please refer to the printed manual for detailed information.

## Data



> 90 % as determined by reducing SDS-PAGE.

## Background

Neuromodulin, also known as Axonal membrane protein GAP-43, Growth-associated protein 43, Neural phosphoprotein B-50, pp46 and GAP43, is a cell membrane protein which belongs to the neuromodulin family. Neuromodulin / GAP43 contains one IQ domain. Neuromodulin / GAP43 is associated with nerve growth. It is a major component of the motile "growth cones" that form the tips of elongating axons. Neuromodulin / GAP43 is involved in neurite outgrowth, a crucial process for the differentiation of neurons. The sudden infant death syndrome (SIDS) is the main cause of postneonatal infant death and its cause is still unknown. Neuromodulin / GAP43 is a marker of synaptic plasticity and is critical for normal development of the serotonergic innervation. Neuromodulin / GAP43 is a major cortical cytoskeleton-associated and calmodulin binding protein that is widely and abundantly expressed during development, maintained in selected brain

## For Research Use Only

A Reliable Research Partner in Life Science and Medicine

Toll-free: 1-888-852-8623

Web: [www.elabscience.com](http://www.elabscience.com)

Tel: 1-832-243-6086

Email: [techsupport@elabscience.com](mailto:techsupport@elabscience.com)

Fax: 1-832-243-6017

# Recombinant Human C6/complement component 6 Protein (His Tag)



Catalog Number: PKSH030844

---

structures in the adult, and reinduced during nerve regeneration. CAP23 and GAP43 are functionally related intrinsic determinants of anatomical plasticity. These proteins function by locally promoting subplasmalemmal actin cytoskeleton accumulation.

---

## For Research Use Only

A Reliable Research Partner in Life Science and Medicine

Toll-free: 1-888-852-8623

Tel: 1-832-243-6086

Fax: 1-832-243-6017

Web: [www.elabscience.com](http://www.elabscience.com)

Email: [techsupport@elabscience.com](mailto:techsupport@elabscience.com)