

Recombinant Human Placental Lactogen/CSH1 Protein (His Tag)

Catalog Number: PKSH032900



Note: Centrifuge before opening to ensure complete recovery of vial contents.

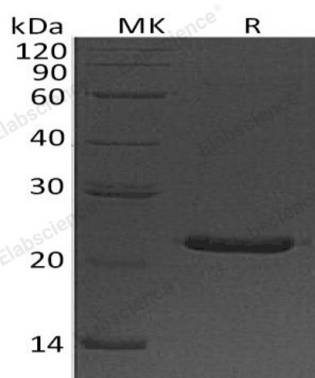
Description

| | |
|---------------------|----------------------------|
| Species | Human |
| Mol_Mass | 23.4 kDa |
| Accession | PODML2 |
| Bio-activity | Not validated for activity |

Properties

| | |
|-----------------------|---|
| Purity | > 95 % as determined by reducing SDS-PAGE. |
| Endotoxin | < 1.0 EU per µg of the protein as determined by the LAL method. |
| Storage | Generally, lyophilized proteins are stable for up to 12 months when stored at -20 to -80 °C. Reconstituted protein solution can be stored at 4-8°C for 2-7 days. Aliquots of reconstituted samples are stable at < -20°C for 3 months. |
| Shipping | This product is provided as lyophilized powder which is shipped with ice packs. |
| Formulation | Lyophilized from a 0.2 µm filtered solution of 20mM Tris-HCl, 150mM NaCl, pH 8.0. Normally 5% - 8% trehalose, mannitol and 0.01% Tween 80 are added as protectants before lyophilization. Please refer to the specific buffer information in the printed manual. |
| Reconstitution | Please refer to the printed manual for detailed information. |

Data



> 95 % as determined by reducing SDS-PAGE.

Background

Chorionic Somatomammotropin Hormone (CSH1) belongs to the Somatotropin/Prolactin family. It is located at the growth hormone locus on chromosome 17. It is produced by cells in the syncytiotrophoblast layer of the placenta only during pregnancy. Although CSH1 does not interact with GHR but only activates PRLR through zinc-induced dimerization. It is expressed mainly in the placenta and utilizes multiple transcription initiation sites. CSH1 plays an important role in stimulating lactation, growth control and metabolism.

For Research Use Only

A Reliable Research Partner in Life Science and Medicine
Tel:400-999-2100

Email:techsupport@elabscience.cn

Web:www.elabscience.cn

Rev. V3.5