

# TLR9 Polyclonal Antibody

Catalog Number:E-AB-70125



**Note:** Centrifuge before opening to ensure complete recovery of vial contents.

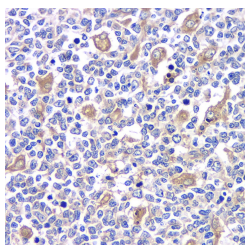
## Description

|                     |  |
|---------------------|--|
| <b>Reactivity</b>   | Human,Mouse  |
| <b>Immunogen</b>    | KLH conjugated Synthetic peptide corresponding to Mouse TLR9               |
| <b>Host</b>         | Rabbit   |
| <b>Isotype</b>      | IgG  |
| <b>Purification</b> | Affinity purification  |
| <b>Conjugation</b>  | Unconjugated   |
| <b>Formulation</b>  | PBS with 0.02% sodium azide, 1% protective protein and 50% glycerol, pH7.4 |

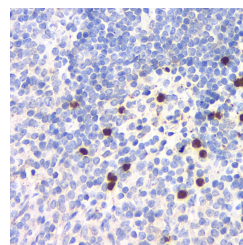
## Applications Recommended Dilution

|            |             |
|------------|-------------|
| <b>IHC</b> | 1:100-1:500 |
|------------|-------------|

## Data



Immunohistochemistry analysis of paraffin-embedded human tonsil using TLR9 Polyclonal Antibody at dilution of 1:200.



Immunohistochemistry analysis of paraffin-embedded mouse spleen using TLR9 Polyclonal Antibody at dilution of 1:200.

## Preparation & Storage

|                |   |
|----------------|---|
| <b>Storage</b> | Store at -20°C. Avoid freeze / thaw cycles. |
|----------------|---|

## Background

The protein encoded by this gene is a member of the Toll-like receptor (TLR) family, which plays a fundamental role in pathogen recognition and activation of innate immunity. TLRs are highly conserved from Drosophila to humans and share structural and functional similarities. They recognize pathogen-associated molecular patterns (PAMPs) that are expressed on infectious agents, and mediate the production of cytokines necessary for the development of effective immunity. Studies in mice and human indicate that this receptor mediates cellular response to unmethylated CpG dinucleotides in bacterial DNA to mount an innate immune response.

## For Research Use Only

A Reliable Research Partner in Life Science and Medicine

Toll-free: 1-888-852-8623

Web: [www.elabscience.com](http://www.elabscience.com)

Tel: 1-832-243-6086

Email: [techsupport@elabscience.com](mailto:techsupport@elabscience.com)

Fax: 1-832-243-6017