

# Recombinant Human PKLR Protein (His Tag)

Catalog Number:PKSH032984



**Note:** Centrifuge before opening to ensure complete recovery of vial contents.

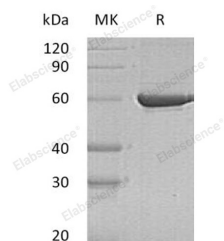
## Description

<b>Synonyms</b>	Pyruvate Kinase Isozymes R/L;Pyruvate Kinase 1;R-Type/L-Type Pyruvate Kinase;Red Cell/Liver Pyruvate Kinase;PKLR;PK1;PKL
<b>Species</b>	Human
<b>Expression Host</b>	HEK293 Cells
<b>Sequence</b>	Met 1-Ser574
<b>Accession</b>	P30613
<b>Calculated Molecular Weight</b>	62.9 kDa
<b>Observed molecular weight</b>	58 kDa
<b>Tag</b>	C-His

## Properties

<b>Purity</b>	> 95 % as determined by reducing SDS-PAGE.
<b>Endotoxin</b>	< 1.0 EU per µg of the protein as determined by the LAL method.
<b>Storage</b>	Store at < -20°C, stable for 6 months. Please minimize freeze-thaw cycles.
<b>Shipping</b>	This product is provided as liquid. It is shipped at frozen temperature with blue ice/gel packs. Upon receipt, store it immediately at < - 20°C.
<b>Formulation</b>	Supplied as a 0.2 µm filtered solution of 20mM Tris-HCl, 500mM NaCl, 5% Trehalose, 5% Mannitol, 0.02% Tween 80, 50% Glycerol, 1mM EDTA, 1mM DTT, pH8.0.
<b>Reconstitution</b>	Not Applicable

## Data



> 95 % as determined by reducing SDS-PAGE.

## Background

Pyruvate Kinase Isozymes R/L (PKLR) belongs to the pyruvate kinase family, There are 4 isozymes of pyruvate kinase in mammals: L, R, M1 and M2. L type is major isozyme in the liver; R is found in red cells; M1 is the main form in muscle, heart and brain; M2 is found in early fetal tissues. PKLR exists as a homotetramer and catalyzes the production of phosphoenolpyruvate from pyruvate and ATP. Defects in PKLR are also the cause of pyruvate kinase deficiency of red cells, which is a frequent cause of hereditary non-spherocytic hemolytic anemia.

## For Research Use Only

A Reliable Research Partner in Life Science and Medicine

Toll-free: 1-888-852-8623

Web: [www.elabscience.com](http://www.elabscience.com)

Tel: 1-832-243-6086

Email: [techsupport@elabscience.com](mailto:techsupport@elabscience.com)

Fax: 1-832-243-6017